

# Track Size Identification.

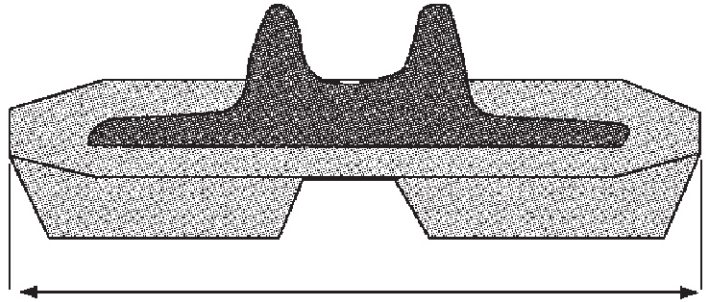
To correctly quote on your track requirements, we need to know the dimensions of your track.  
The following will assist you in obtaining these dimensions.

Tracks are specified using the following minimum formula:-

**TRACK WIDTH x PITCH LENGTH x NUMBER OF LINKS** (e.g: 230 x 72 x 43 )

## TRACK WIDTH:

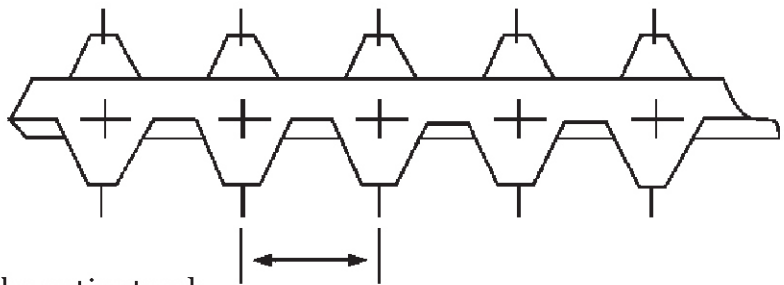
Measure the width (in MM) across the track.



## PITCH LENGTH:

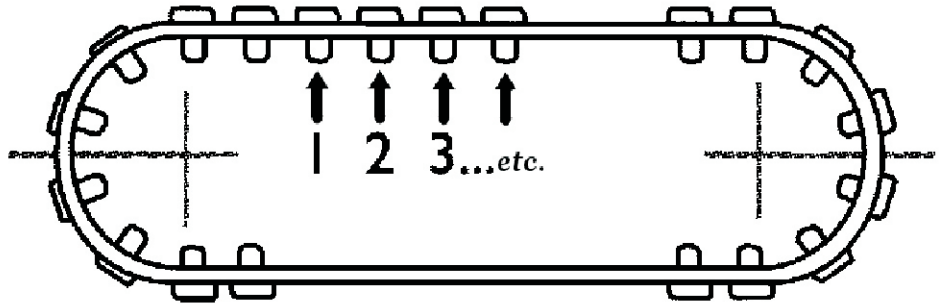
Measure the distance (in MM) between the centre of one link to the centre of the next link.

Note: On damaged tracks, to make accurate measurements, it may be better to measure ten pitch lengths and divide by 10.  
(E.g. 550 mm / 10 = 55 mm pitch length)



## NUMBER of LINKS:

Count the individual number of links on the entire track.



**MACHINE INFORMATION:** The MAKE of your machine \_\_\_\_\_

The MODEL of your machine \_\_\_\_\_

**Extra Information:** Occasionally we may require more information such as the profile of the roller, etc. In such cases, we will inform you and specify the information required. Generally, more than 80% of tracks can be identified from the information above.



We can supply bolt-on or clamp-on rubber pads of various sizes to fit most excavators.  
Call and ask for a quote.